



BOSCH

LET'S GET EN
STARTED

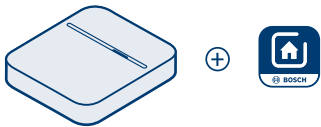


Twist

Quick start guide



LET'S GET STARTED



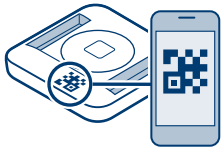
1. Install Smart Home Controller

If not yet installed: Download the Bosch Smart Home app and install the Bosch Smart Home Controller.



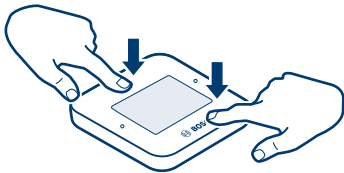
2. Launch the Smart Home App

Launch the Bosch Smart Home App and select "Add device". Follow the instructions in the app.

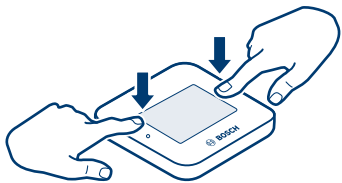


3. Scan the QR code

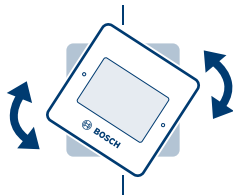
The app will prompt you to scan the QR code on the product. The QR code is on the back of the Twist. Remove the battery compartment to find it.



Press at the top and bottom to activate functions.



Press on the right and left to select functions.



If the device is mounted in the wall holder:
turn the Twist a little to the right or left to select
functions. It returns to its home position auto-
matically.

Technical Data

Device type name	Twist
Article number	8-750-000-328
Batteries	2 x 1.5 V LR03/Micro/AAA - only alkaline batteries
Wireless frequency	2.4 GHz
Max. transmitting capacity	10 mW
Radio range in free-field conditions	up to 90 m
Degree of protection	IP20
Software class	Class A
Ambient temperature	+5°C to + 35°C (32°F to 122°F)



www.bosch-smarthome.com/installation

12/2017 8-750-000-514 V001

Service instructions

- ▶ If you have any questions, please contact our freephone service hotline on:
00800 8437 6278
- ▶ You can find more information on device operation and care in our online FAQs at:
www.bosch-smarthome.com/faq



Robert Bosch Smart Home GmbH
Schockenriedstraße 17
70565 Stuttgart-Vaihingen



00800 8437 6278 (free)
Mon - Fri 7 a.m. – 8 p.m.
Sat 8 a.m. – 6 p.m.



service@bosch-smarthome.com

Open-Source Software

This Bosch Smart Home product uses open-source software. This Bosch Smart Home product uses open-source software. The license information for the components is as follows.

CMSIS

Copyright (c) 2009 - 2015 ARM LIMITED

All rights reserved.

Redistribution and use in source and binary forms, with or without modification, are permitted provided that the following conditions are met:

- ▶ Redistributions of source code must retain the above copyright notice, this list of conditions and the following disclaimer.
- ▶ Redistributions in binary form must reproduce the above copyright notice, this list of conditions and the following disclaimer in the documentation and/or other materials provided with the distribution.

- ▶ Neither the name of ARM nor the names of its contributors may be used to endorse or promote products derived from this software without specific prior written permission.

THIS SOFTWARE IS PROVIDED BY THE COPYRIGHT HOLDERS AND CONTRIBUTORS "AS IS" AND ANY EXPRESS OR IMPLIED WARRANTIES, INCLUDING, BUT NOT LIMITED TO, THE IMPLIED WARRANTIES OF MERCHANTABILITY AND FITNESS FOR A PARTICULAR PURPOSE ARE DISCLAIMED. IN NO EVENT SHALL COPYRIGHT HOLDERS AND CONTRIBUTORS BE LIABLE FOR ANY DIRECT, INDIRECT, INCIDENTAL, SPECIAL, EXEMPLARY, OR CONSEQUENTIAL DAMAGES (INCLUDING, BUT NOT LIMITED TO, PROCUREMENT OF SUBSTITUTE GOODS OR SERVICES; LOSS OF USE, DATA, OR PROFITS; OR BUSINESS INTERRUPTION) HOWEVER CAUSED AND ON ANY THEORY OF LIABILITY, WHETHER IN CONTRACT, STRICT LIABILITY, OR

TORT (INCLUDING NEGLIGENCE OR OTHERWISE) ARISING IN ANY WAY OUT OF THE USE OF THIS SOFTWARE, EVEN IF ADVISED OF THE POSSIBILITY OF SUCH DAMAGE.

pdi-driver

Copyright (c) Pervasive Displays Inc. All rights reserved.

Redistribution and use in source and binary forms, with or without modification, are permitted provided that the following conditions are met:

1. Redistributions of source code must retain the above copyright notice, this list of conditions and the following disclaimer.
2. Redistributions in binary form must reproduce the above copyright notice, this list of conditions and the following disclaimer in the documentation and/or other materials provided with the distribution.

mbedtls

Copyright (C) 2015-2017, Silicon Labs, <http://www.silabs.com>

Copyright (C) 2006-2015, ARM Limited, All Rights Reserved

Licensed under the Apache License, Version 2.0 (the "License"); you may not use this file except in compliance with the License. You may obtain a copy of the License at

<http://www.apache.org/licenses/LICENSE-2.0>

Unless required by applicable law or agreed to in writing, software distributed under the License is distributed on an "AS IS" BASIS, WITHOUT WARRANTIES OR CONDITIONS OF ANY KIND, either express or implied.

See the License for the specific language governing permissions and limitations under the License.

Safety instructions

- ▶ Take the batteries out of the device if it is not used for a prolonged period of time.
- ▶ The enclosed batteries are not suitable for charging.
- ▶ Do not modify the product in any way. Any other use is deemed as unintended. No liability is accepted for any consequential damage.
- ▶ The product may only be used indoors with Bosch Smart Home original components and recommended partner products.
- ▶ Avoid dust, moisture, vibrations, constant sun or other sources of heat radiation, cold and mechanical stress.
- ▶ When choosing a fixing location and when drilling, pay attention to potential electrical lines and/or supply lines that could be behind the wall.

- ▶ Please ensure a minimum clearance of 10 cm to 15 cm between the device and wall bracket and a heart pacemaker. The magnets in the device and wall bracket generate a field which may impair the function of the heart pacemaker.

Maintenance and care

The product is maintenance-free. Repairs should only be performed by qualified persons. Clean the product with a soft clean dry and lint-free cloth. Do not use cleaning agents containing solvents. Incorrect handling (see notes on intended use) or non-observance of hazard warnings may compromise the protection afforded by the device.

Environmental protection and disposal

Electrical and electronic equipment that is no longer usable and defective or used batteries must be separated from other waste and recycled in an environmentally friendly manner (European Directive on waste electrical and electronic equipment). To dispose of electrical and electronic equipment or batteries, use your country-specific return and collection systems.

Declaration of conformity

Robert Bosch Smart Home GmbH herewith declares that the Bosch Smart Home Twist Remote Control wireless system type complies with Directive 2014/53/EU. The full text of the EU declaration of conformity is available on the following Internet website:

**[www.bosch-smarthome.com/
EU-declarations-of-conformity](http://www.bosch-smarthome.com/EU-declarations-of-conformity)**

